

NATURA

- AMBIENTE FISICO

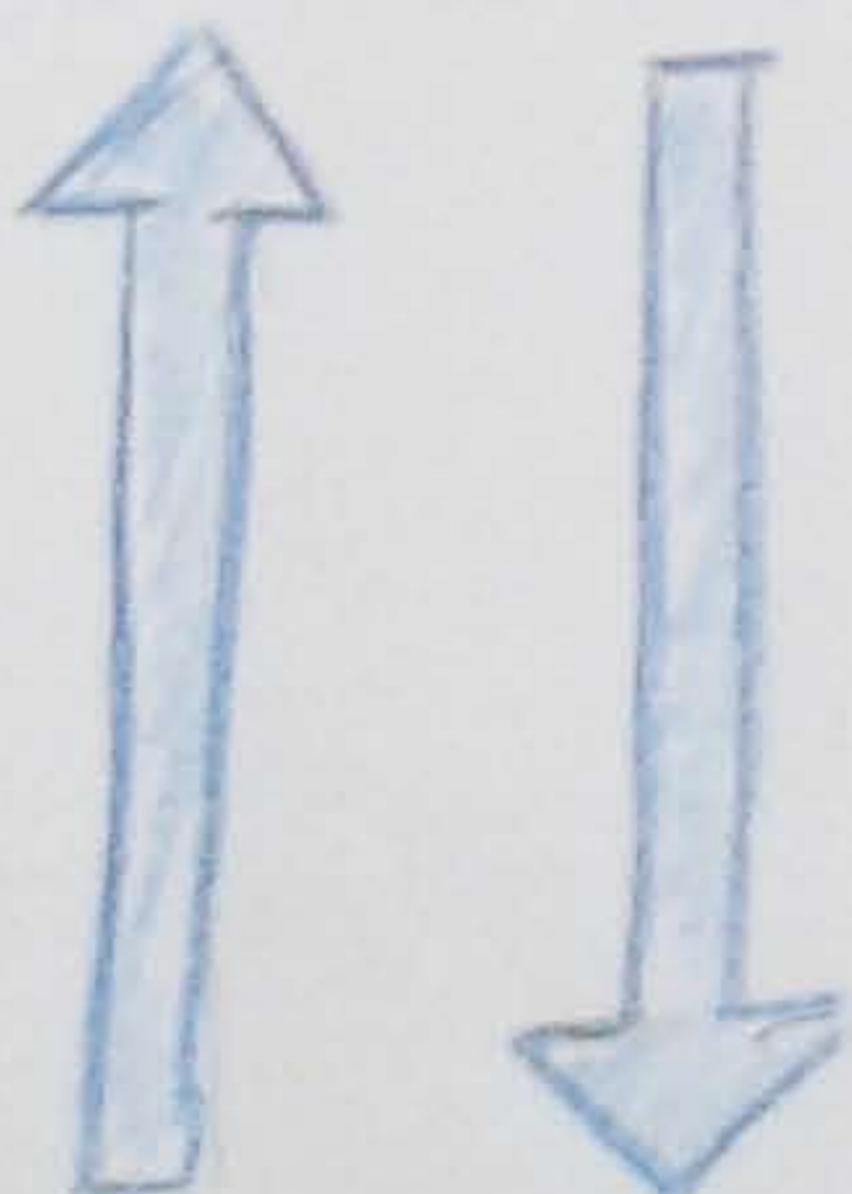


CULTURA

- CONOSCENZA + STORIA



PAESAGGIO



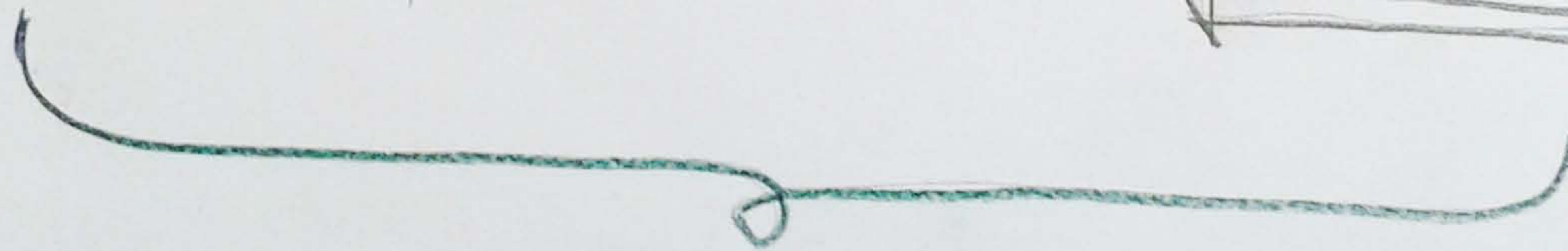
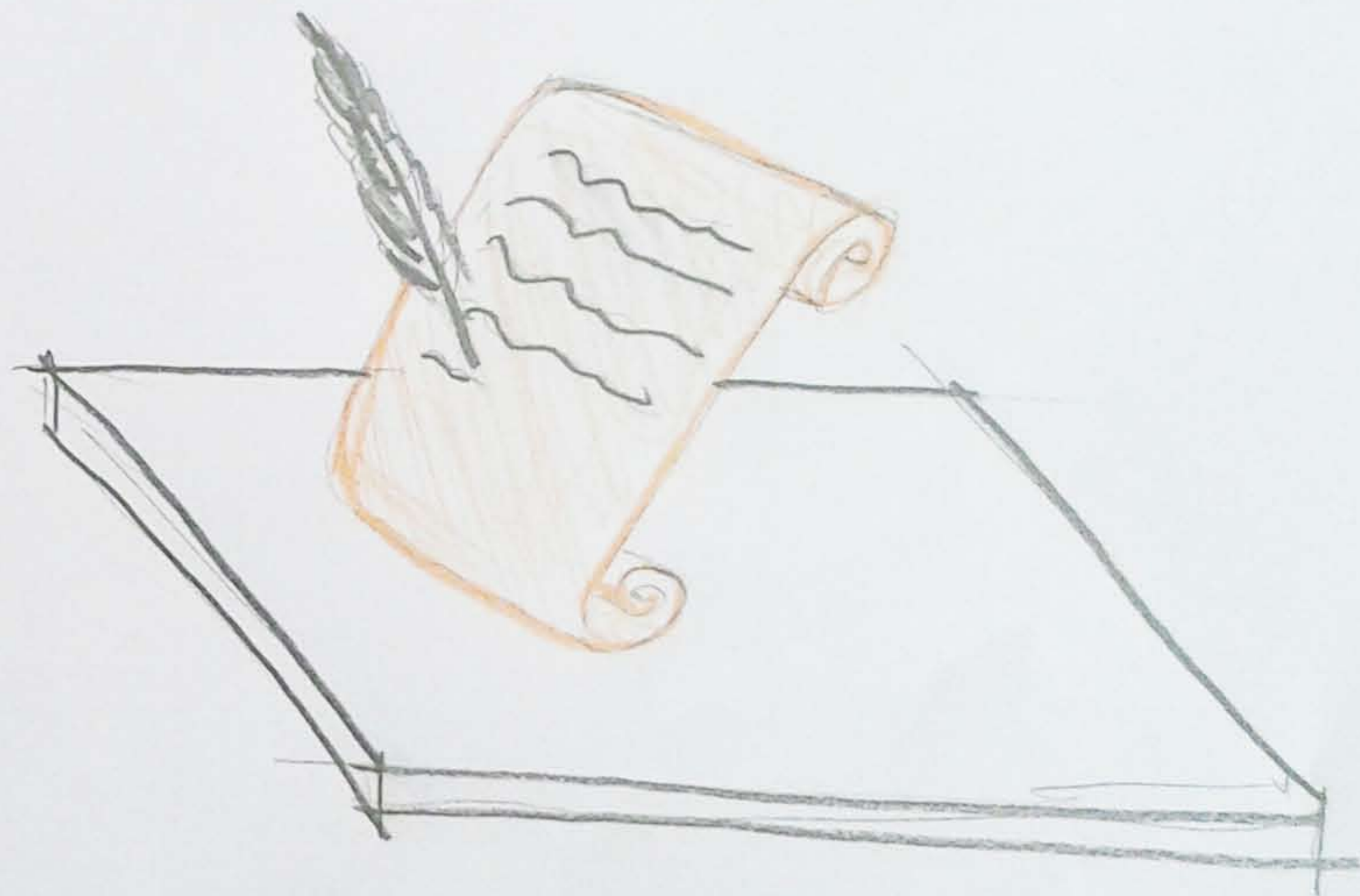
AZIONE ANTROPICA

UOMO



PAESAGGIO

PALINSESTO



PROGETTO

PAESAGGIO

BEL DI SEGNO



PROGETTO

VALORE

"ESTETICO"

VS

PIANIFICAZIONE

→ OBIETTIVI 1, 2, ..., n

→ AZIONI a, b, c, ..., z

UOMO
SPETTATORE

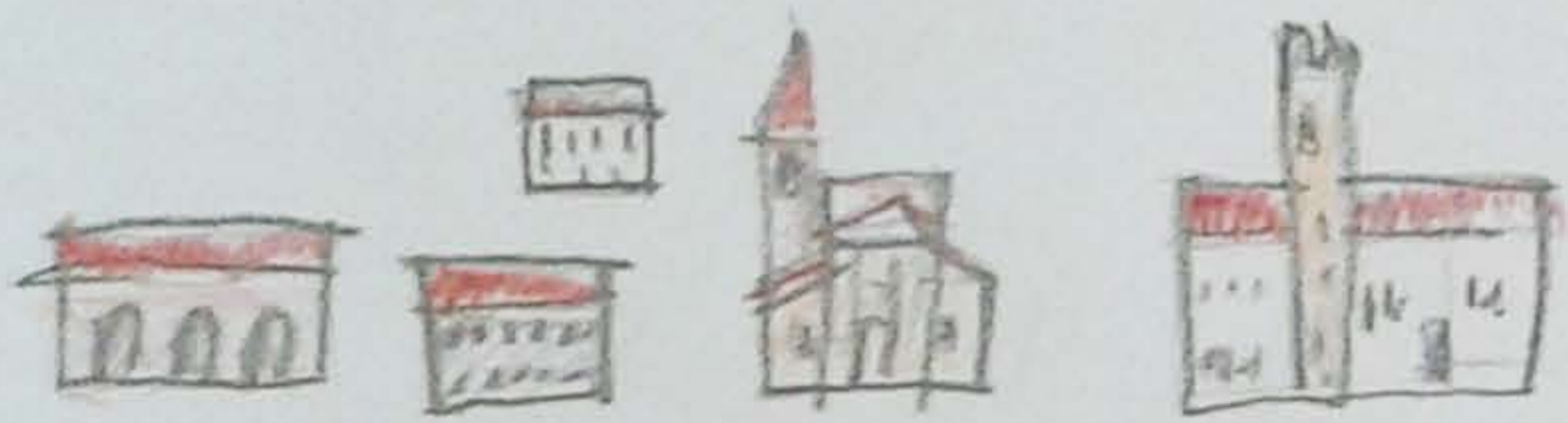
VS

UOMO
ATTORE

INCLUDERE : PROGETTO di PAESAGGIO

AGRI - CULTURA

+



EDILIZIA

SOCIALITÀ

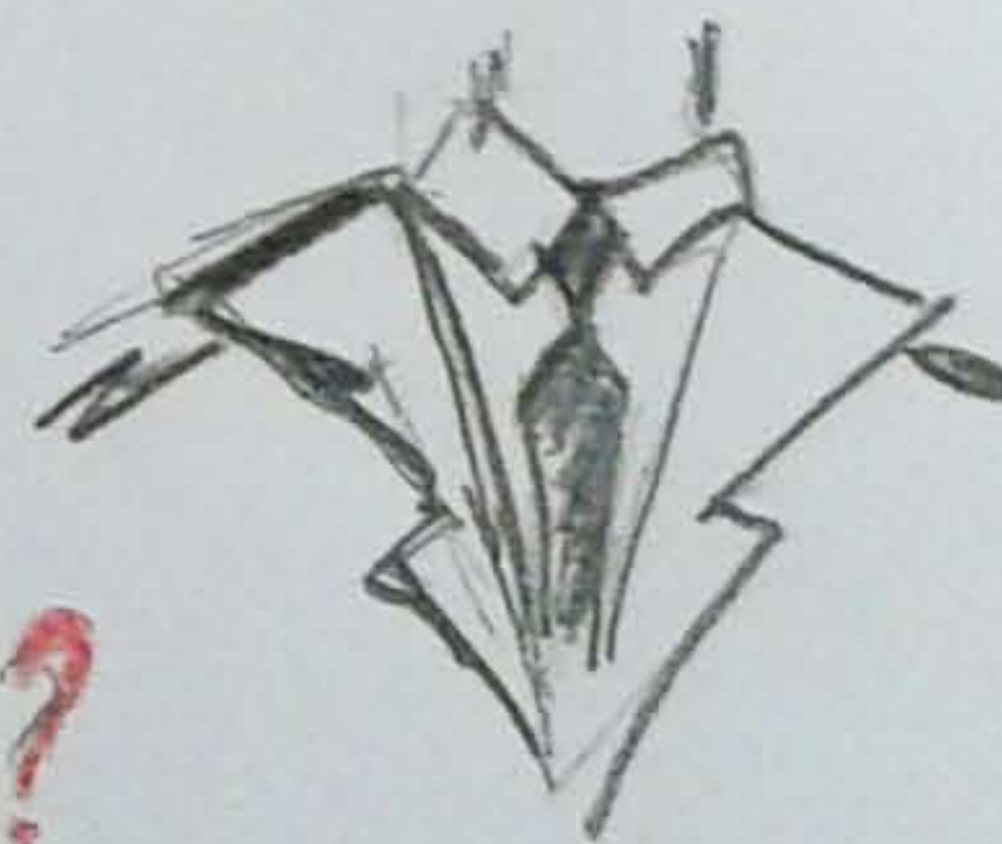
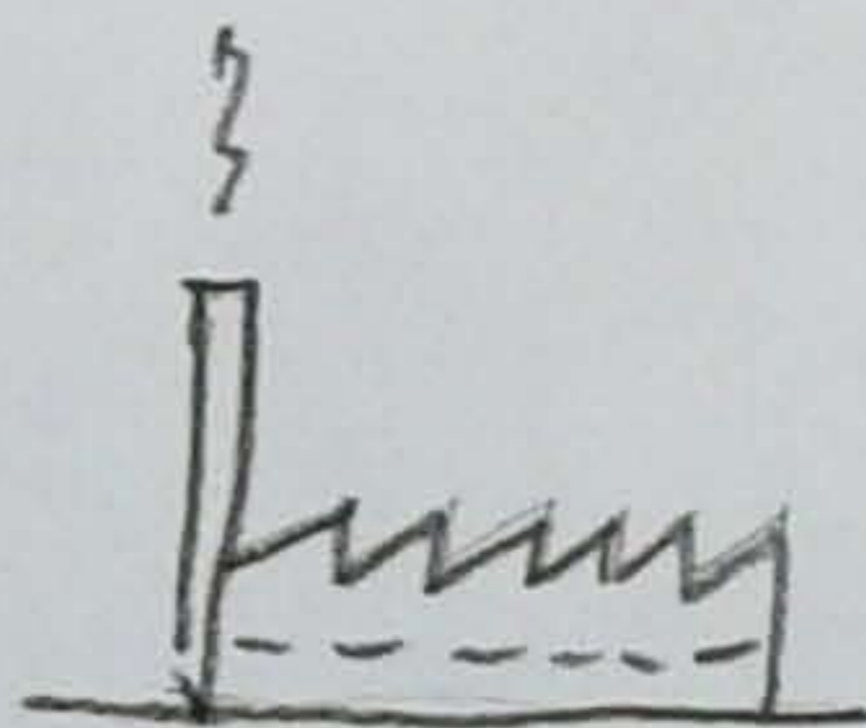
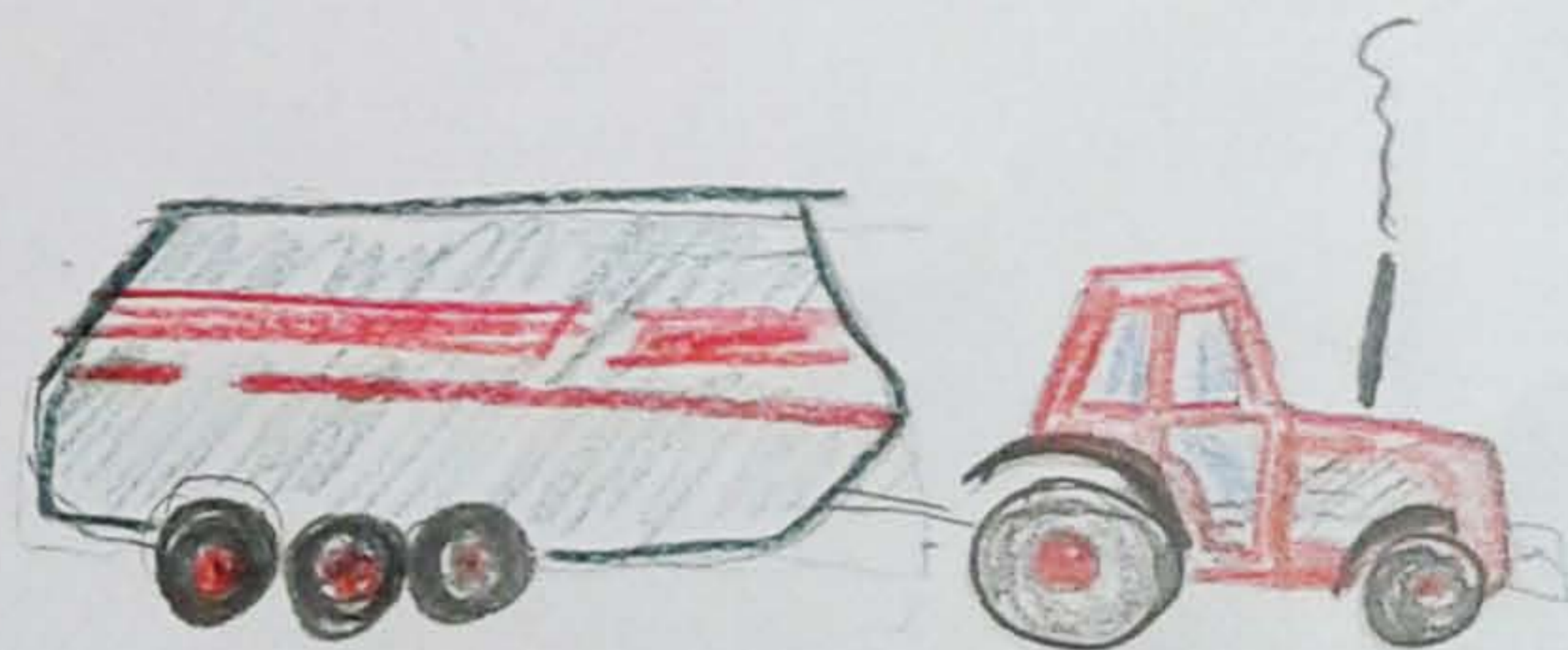


ABBITI

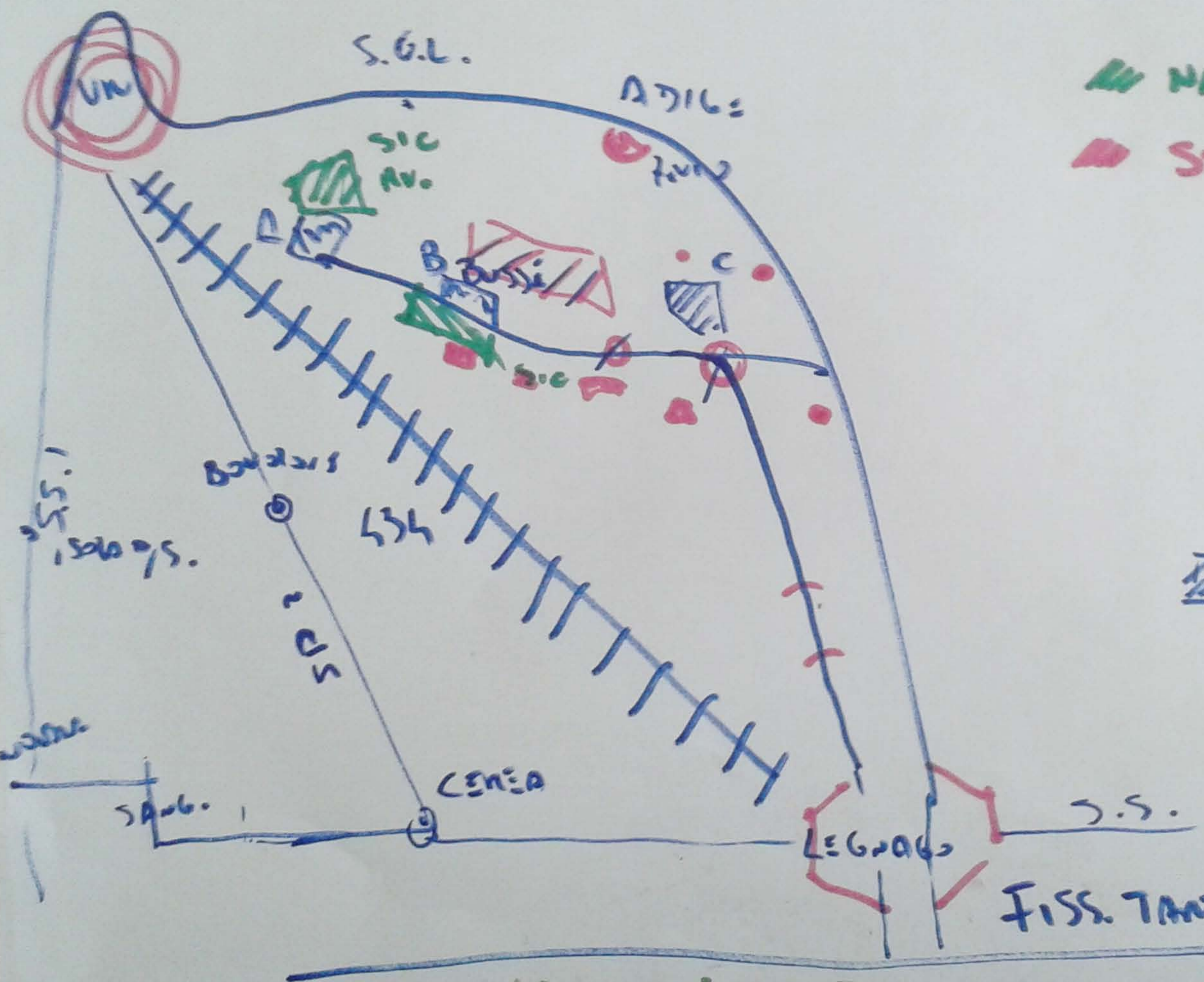
e

MODI DI

LAVORO



... QUANTI OCCHI e BRACCIA sul NOSTRO TERRITORIO?



- VIE — 430
- SINOSE
- NOME
- STORY
- ▨ ST. 410
- ST. 410
- C.S.
- VIE
- ~ PARTI
- * PLINI
- △ ANCHIO
- ▨ CAVE PLUMIO
- B TONZO
- C ANCHIO

VALLI GRANDI